



TECHNOVATION INTERNATIONAL

PRECISION MACHINERY MANUFACTURER



TECHNO-HQMC

TECHNO-MEPEP
IMM

TECO smart
ROBOT

**AUTOMATIC SERVO PLASTIC INJECTION
MOLDING MACHINES AND AUTOMATION SYSTEMS**

www.technovation.co.in



MD-Series

TECHNOMEPEP SERVO PLASTIC INJECTION MOLDING MACHINES



AN-Series

AUTOMATIC SERVO PLASTIC INJECTION MOLDING MACHINE AND AUTOMATION SYSTEMS



F-Series

HIGH RAPID LM GUIDWAYS INJECTION MOLDING MACHINE



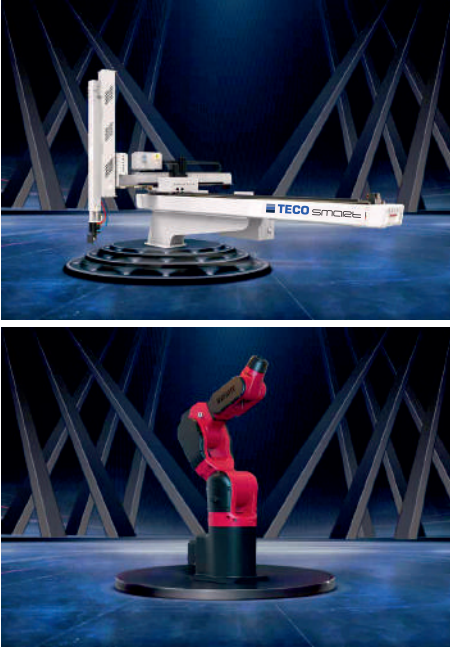
MDS-Series

MOBILE PHONE HIGH SPEED SPECIAL INJECTION MOLDING MACHINE



V-Series

THIN WALL PACKAGE INJECTION MOLDING MACHINES



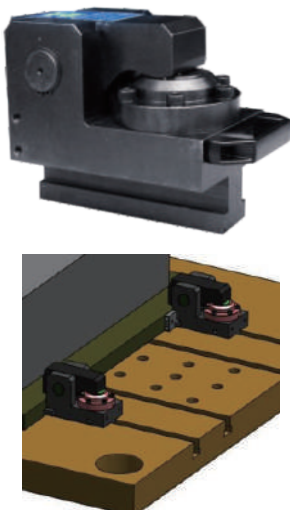
- Single three and six axis Servo Robots.
- Sprue Pickers (Swing Arm Robots)
- End of Arm Tooling (EOAT)
- Online Degating unit & Static Control.
- Six axis robot for complex applications with multiple degrees of freedom
- The repeat positioning accuracy is + 0.05 mm
- Six axis robot suitable for loading and unloading, injection machine, die casting, assembling, coating industry, polishing etc.

DIE MONITOR/VISION SENSOR CAMERA

- Effective protection of mold security reduce mold maintenance cost, reduce labour investment, guarantee lead time.
- New generation mold protector is pursuing more convenient operation, steady performance, with patented infrared technology can meet various growing application.



HYDRAULIC QUICK MOLD CHANGE SYSTEM



- Mold changing can be reduced by 70% as compared to traditional system.
- One person is enough to change the mold.
- Highly safe and secure for operators.
- Most economical solution for Molding Machines having T-slot Platens.



TECHNOVATION INTERNATIONAL
PRECISION MACHINERY MANUFACTURER

www.technovation.co.in



Works :Plot No. 11, Nepco Compound, 20/4, Mathura Road, Faridabad - 121006, Haryana (India)
Mobile: 9910178880, 9821129905
Regd. Off.:Excel-502, Imperial Estate, Sec-82, Faridabad
Facebook:facebook.com/technovationindia
Web:www.technovation.co.in
<http://www.indiamart.com/technovationinternational/>

Sales Partner :

Regional Offices

- * Ahmedabad * Bengaluru * Pune